

PM127 Modbus

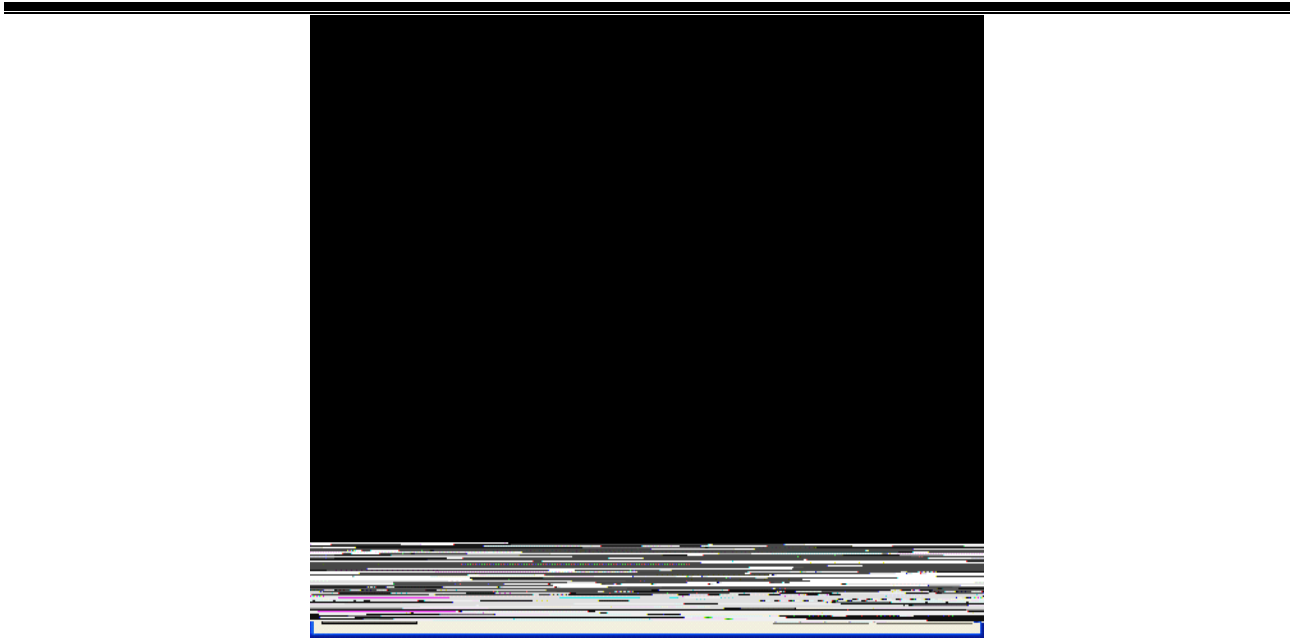
T

| | |
|------|-----------|
| | |
| V1.0 | 2011-12-9 |

1. PM-127

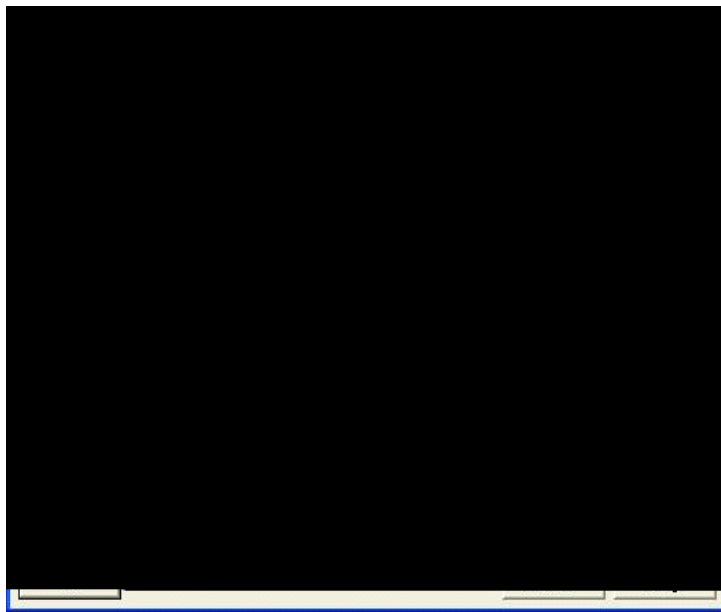
● PM-127 8V 30V

"



● Modbus Master

Modbus



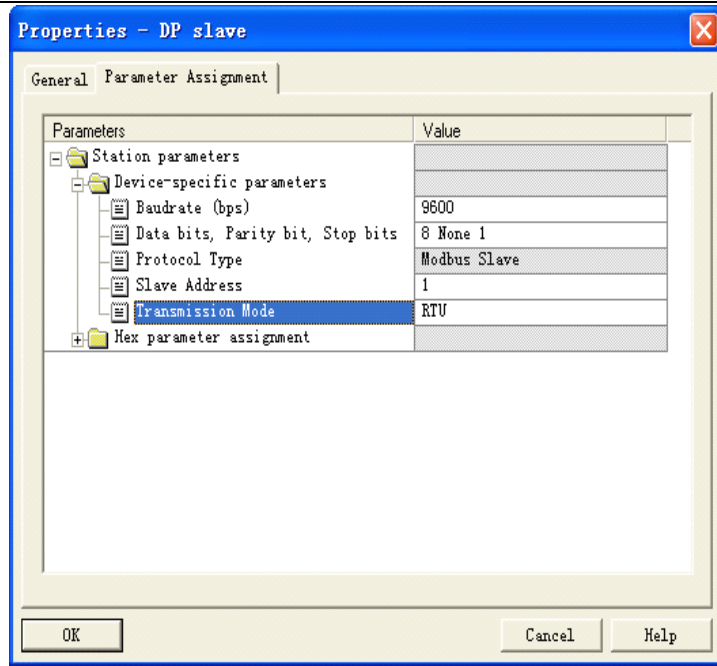
| Address | Modbus | Starting Address | PM-127 | Modbus | No. of Points | Slave |
|---------|--------|------------------|--------|--------|---------------|-------|
|---------|--------|------------------|--------|--------|---------------|-------|

● Modbus Slave

Modbus

PROFIBUS DP

PM-27



- Modbus Slave

Modbus



4.

PROFIBUS DP

step7

-

GSD

Step7

GSD

-

Step7

PROFIBUS DP

PM-127

PROIFBUS DP

-

-

PLC



-
- 8. Step7 Consistent
 - " 2 words Input Consistent"

| | | | |
|--|-----------------------------|------------------|----------------|
| | Modbus | PLC | " SFC14,SFC15" |
| | | 2 words | PLC |
| | " 2 words Input Consistent" | " 2 words Input" | PLC |

- 9.
 - STA PBF PROFIBUS DP
 1. PROIFBUS DP GND
 2. Step7 PROFIBUS DP PROFIBUS DP
 3. PROFIBUS DP

120
 - RX TX Modbus
 1. RS485 PM-125 A+ B-
 2. STEP7 PM-127

- 10.
 - PROFIBUS DP
 - " " " " Modbus Master STEP7 PM-127
 - Modbus